

RF-A // ROUND TAPERED ALUMINUM

ROADWAY METAL POLE



King Luminaire

POLE SPECIFICATIONS

MATERIAL:
Round Tapered Aluminum

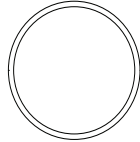
POLE HEIGHT:
19' - 28'

OPTIONS:
GFI - Ground Fault Receptacle
BA - Banner Arms
FPH - Flower Pot Holder
FH - Flag Holder

ALLOY:
5052-H32

FINISH:
Available in textured or smooth.

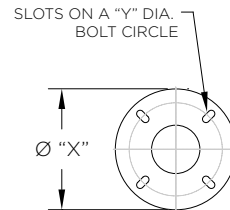
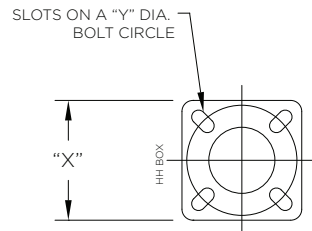
CROSS SECTION:



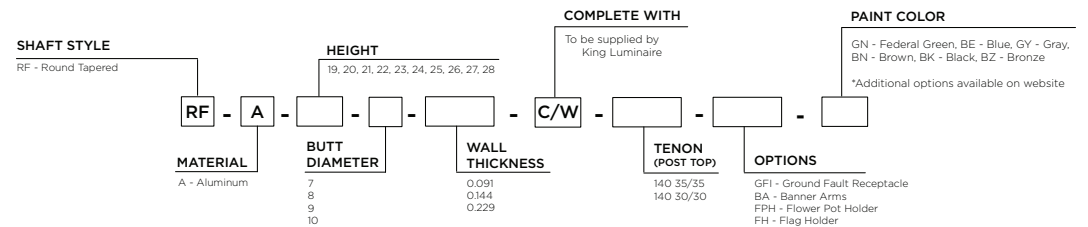
Round Tapered (RF)

BASEPLATE DETAILS

Pole		Baseplate				Bolt Circle		Anchor Bolts	
Butt Diameter (in)	Wall Thickness (in)	"X" Size (in)	Square or Circle	Thickness (in)	Corner Radius (in)	"Y" Dia (in)	+/- (in)	Dia x Length x Hook (in)	Projection (in)
7	0.091	12.0625	Square	0.75	1.75	11	0.75	0.75 x 27 x 3.75	3.25
7	0.144	12.0625	Square	0.75	1.75	11	0.75	0.75 x 27 x 3.75	3.25
7	0.229	12.0625	Square	0.75	1.75	11	0.75	0.75 x 27 x 3.75	3.25
8	0.144	12.0625	Square	0.75	1.75	11.6875	0.5625	0.75 x 27 x 3.75	3.25
8	0.229	12.0625	Square	1	1.75	11.6875	0.5625	0.75 x 27 x 3.75	3.5
9	0.091	15.5625	Circle	0.75	-	12.5	0	0.75 x 27 x 3.75	3.25
9	0.144	15.5625	Circle	0.75	-	12.5	0	0.75 x 27 x 3.75	3.25
9	0.229	15.5625	Circle	1	-	12.5	0	1 x 36 x 5	4.25
10	0.229	14	Square	1	2	14.25	0.75	1 x 36 x 5	4.25



HOW TO ORDER



SHAFT DETAILS

RF-A ROADWAY METAL POLE

RF ALUMINUM // Pole Details

Nominal Mounting Height (ft)	Catalog Code	Alloy	Butt (in)	Tip (in)	Wall Thickness (in)	Handhole	Wt. (lbs) *
19	RF-A-19-7-0.144	5052-H32	7	4.34	0.144	3" x 5" Reinforced (MIN 14" AG)	68.0
	RF-A-19-7-0.229	5052-H32	7	4.34	0.229	3" x 5" Reinforced (MIN 14" AG)	101.0
20	RF-A-20-7-0.144	5052-H32	7	4.2	0.144	3" x 5" Reinforced (MIN 14" AG)	71.0
	RF-A-20-7-0.229	5052-H32	7	4.2	0.229	3" x 5" Reinforced (MIN 14" AG)	104.0
	RF-A-20-8-0.144	5052-H32	8	5.2	0.144	3" x 5" Reinforced (MIN 14" AG)	82.0
	RF-A-20-8-0.229	5052-H32	8	5.2	0.229	3" x 5" Reinforced (MIN 14" AG)	125.0
21	RF-A-21-7-0.229	5052-H32	7	4.06	0.229	3" x 5" Reinforced (MIN 14" AG)	108.0
	RF-A-21-8-0.144	5052-H32	8	5.06	0.144	3" x 5" Reinforced (MIN 14" AG)	84.0
	RF-A-21-8-0.229	5052-H32	8	5.06	0.229	3" x 5" Reinforced (MIN 14" AG)	129.0
	RF-A-21-9-0.091	5052-H32	9	6.06	0.091	3" x 5" Reinforced (MIN 16" AG)	68.0
	RF-A-21-9-0.144	5052-H32	9	6.06	0.144	3" x 5" Reinforced (MIN 16" AG)	99.0
	RF-A-21-9-0.229	5052-H32	9	6.06	0.229	3" x 5" Reinforced (MIN 16" AG)	152.0
22	RF-A-22-8-0.144	5052-H32	8	4.92	0.144	3" x 5" Reinforced (MIN 14" AG)	87.0
	RF-A-22-8-0.229	5052-H32	8	4.92	0.229	3" x 5" Reinforced (MIN 14" AG)	133.0
	RF-A-22-9-0.091	5052-H32	9	5.92	0.091	3" x 5" Reinforced (MIN 16" AG)	70.0
	RF-A-22-9-0.144	5052-H32	9	5.92	0.144	3" x 5" Reinforced (MIN 16" AG)	102.0
	RF-A-22-9-0.229	5052-H32	9	5.92	0.229	3" x 5" Reinforced (MIN 16" AG)	157.0
23	RF-A-23-8-0.144	5052-H32	8	4.78	0.144	3" x 5" Reinforced (MIN 14" AG)	89.0
	RF-A-23-8-0.229	5052-H32	8	4.78	0.229	3" x 5" Reinforced (MIN 14" AG)	137.0
	RF-A-23-9-0.144	5052-H32	9	5.78	0.144	3" x 5" Reinforced (MIN 16" AG)	105.0
	RF-A-23-9-0.229	5052-H32	9	5.78	0.229	3" x 5" Reinforced (MIN 16" AG)	162.0
24	RF-A-24-8-0.144	5052-H32	8	4.64	0.144	3" x 5" Reinforced (MIN 14" AG)	92.0
	RF-A-24-8-0.229	5052-H32	8	4.64	0.229	3" x 5" Reinforced (MIN 14" AG)	141.0
	RF-A-24-9-0.144	5052-H32	9	5.64	0.144	3" x 5" Reinforced (MIN 16" AG)	108.0
	RF-A-24-9-0.229	5052-H32	9	5.64	0.229	3" x 5" Reinforced (MIN 16" AG)	166.0
25	RF-A-25-8-0.229	5052-H32	8	4.5	0.229	3" x 5" Reinforced (MIN 14" AG)	145.0
	RF-A-25-9-0.144	5052-H32	9	5.5	0.144	3" x 5" Reinforced (MIN 16" AG)	111.0
	RF-A-25-9-0.229	5052-H32	9	5.5	0.229	3" x 5" Reinforced (MIN 16" AG)	171.0
26	RF-A-26-8-0.229	5052-H32	8	4.36	0.229	3" x 5" Reinforced (MIN 14" AG)	149.0
	RF-A-26-9-0.144	5052-H32	9	5.36	0.144	3" x 5" Reinforced (MIN 16" AG)	114.0
	RF-A-26-9-0.229	5052-H32	9	5.36	0.229	3" x 5" Reinforced (MIN 16" AG)	176.0
27	RF-A-27-8-0.229	5052-H32	8	4.22	0.229	3" x 5" Reinforced (MIN 14" AG)	152.0
	RF-A-27-9-0.144	5052-H32	9	5.22	0.144	3" x 5" Reinforced (MIN 16" AG)	117.0
	RF-A-27-9-0.229	5052-H32	9	5.22	0.229	3" x 5" Reinforced (MIN 16" AG)	180.0
	RF-A-27-10-0.229	5052-H32	10	6.22	0.229	3" x 5" Reinforced (MIN 20" AG)	204.0
28	RF-A-28-9-0.229	5052-H32	9	5.08	0.229	3" x 5" Reinforced (MIN 16" AG)	184.0
	RF-A-28-10-0.229	5052-H32	10	6.08	0.229	3" x 5" Reinforced (MIN 20" AG)	209.0

* Weight includes the pole shaft and baseplate.

SHAFT LOADING

RF-A ROADWAY METAL POLE

RF ALUMINUM // Loading	Nominal Mounting Height (ft)	Catalog Code	Design Information // AASHTO LTS-6, Latest Revision **									
			90 MPH		100 MPH		110 MPH		120 MPH		150 MPH	
			Max EPA (sq ft)	Max Load (lbs)	Max EPA (sq ft)	Max Load (lbs)	Max EPA (sq ft)	Max Load (lbs)	Max EPA (sq ft)	Max Load (lbs)	Max EPA (sq ft)	Max Load (lbs)
19	RF-A-19-7-0.144	4.4	200	3.1	200	2.3	200	1.8	200	0.8	200	
	RF-A-19-7-0.229	6.8	200	5.1	200	4.0	200	3.2	200	1.7	200	
20	RF-A-20-7-0.144	3.7	200	2.5	200	1.8	200	1.3	200	0.5	200	
	RF-A-20-7-0.229	6.0	200	4.4	200	3.3	200	2.6	200	1.3	200	
	RF-A-20-8-0.144	6.4	200	4.9	200	3.8	200	3.0	200	1.5	200	
	RF-A-20-8-0.229	9.3	200	7.2	200	5.7	200	4.6	200	2.5	200	
21	RF-A-21-7-0.229	5.2	200	3.7	200	2.7	200	2.1	200	1.0	200	
	RF-A-21-8-0.144	5.5	200	4.2	200	3.2	200	2.5	200	1.2	200	
	RF-A-21-8-0.229	8.2	200	6.4	200	5.0	200	4.0	200	2.1	200	
	RF-A-21-9-0.091	4.4	200	3.2	200	2.4	200	1.8	200	0.5	200	
	RF-A-21-9-0.144	8.7	200	6.8	200	5.4	200	4.3	200	2.1	200	
	RF-A-21-9-0.229	11.8	300	9.4	200	7.5	200	6.1	200	3.2	200	
	RF-A-21-9-0.229	11.8	300	9.4	200	7.5	200	6.1	200	3.2	200	
22	RF-A-22-8-0.144	4.7	200	3.5	200	2.6	200	2.0	200	0.9	200	
	RF-A-22-8-0.229	7.2	200	5.6	200	4.4	200	3.5	200	1.7	200	
	RF-A-22-9-0.091	3.6	200	2.6	200	1.9	200	1.4	200	-	-	
	RF-A-22-9-0.144	7.7	200	6.0	200	4.7	200	3.8	200	1.8	200	
	RF-A-22-9-0.229	10.7	300	8.5	200	6.8	200	5.4	200	2.8	200	
23	RF-A-23-8-0.144	3.9	200	2.8	200	2.1	200	1.6	200	0.5	200	
	RF-A-23-8-0.229	6.4	200	4.8	200	3.7	200	2.9	200	1.4	200	
	RF-A-23-9-0.144	6.8	200	5.2	200	4.1	200	3.2	200	1.4	200	
	RF-A-23-9-0.229	9.8	200	7.6	200	6.0	200	4.8	200	2.4	200	
24	RF-A-24-8-0.144	3.3	200	2.2	200	1.6	200	1.1	200	-	-	
	RF-A-24-8-0.229	5.6	200	4.1	200	3.2	200	2.4	200	1.1	200	
	RF-A-24-9-0.144	6.0	200	4.5	200	3.5	200	2.7	200	1.1	200	
	RF-A-24-9-0.229	8.8	200	6.8	200	5.4	200	4.3	200	2.0	200	
25	RF-A-25-8-0.229	4.9	200	3.5	200	2.6	200	2.0	200	0.7	200	
	RF-A-25-9-0.144	5.2	200	3.9	200	3.0	200	2.3	200	0.8	200	
	RF-A-25-9-0.229	7.9	200	6.0	200	4.7	200	3.7	200	1.7	200	
26	RF-A-26-8-0.229	4.3	200	2.9	200	2.1	200	1.5	200	0.5	200	
	RF-A-26-9-0.144	4.4	200	3.3	200	2.4	200	1.8	200	0.5	200	
	RF-A-26-9-0.229	7.0	200	5.3	200	4.1	200	3.2	200	1.3	200	
27	RF-A-27-8-0.229	3.6	200	2.4	200	1.6	200	1.1	200	-	-	
	RF-A-27-9-0.144	3.8	200	2.7	200	2.0	200	1.4	200	-	-	
	RF-A-27-9-0.229	6.2	200	4.7	200	3.6	200	2.7	200	1.0	200	
	RF-A-27-10-0.229	9.3	200	7.2	200	5.6	200	4.4	200	1.8	200	
28	RF-A-28-9-0.229	5.4	200	4.0	200	3.0	200	2.3	200	0.7	200	
	RF-A-28-10-0.229	8.5	200	6.5	200	5.0	200	3.9	200	1.4	200	

** EPA represents the Effective Projected Area of the attachments on the pole. Designs are limited to post top luminaires or attachments located at or below the mounting height. Consult factory for poles supporting attachments located above the mounting height.

BASE COMPATIBILITY

Pole Butt Size	Split Bases									
	KSB10	KSB11	KSB16	KSB19	KSB20	KSB52	KSB70	KSB76	KSB77	
7										
8										
9										
10										