

RF-A // ROUND TAPERED ALUMINUM

PEDESTRIAN METAL POLE



King Luminaire

POLE SPECIFICATIONS

MATERIAL:
Round Tapered Aluminum

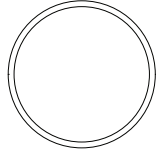
POLE HEIGHT:
10' - 18'

OPTIONS:
GFI - Ground Fault Receptacle
BA - Banner Arms
FPH - Flower Pot Holder
FH - Flag Holder

ALLOY:
5052-H32

FINISH:
Available in textured or smooth.

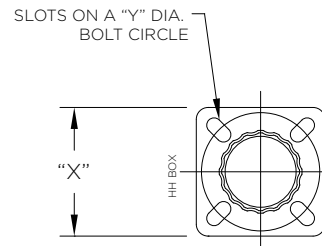
CROSS SECTION:



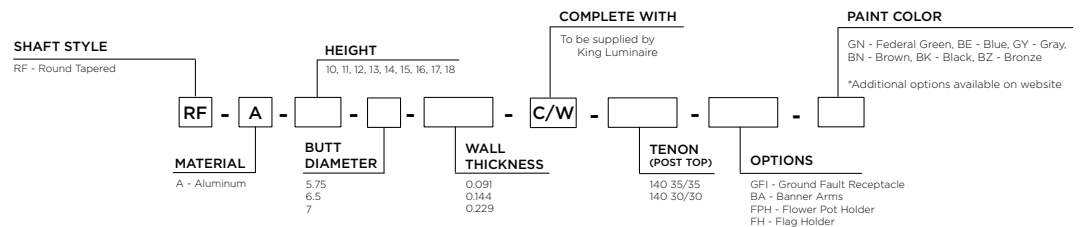
Round Tapered (RF)

BASEPLATE DETAILS

Pole		Baseplate			Bolt Circle		Anchor Bolts	
Butt Diameter (in)	Wall Thickness (in)	"X" Square (in)	Thickness (in)	Corner Radius (in)	"Y" Dia (in)	+/- (in)	Dia x Length x Hook (in)	Projection (in)
5.75	0.091	11.25	0.5	1.75	10	1	0.75 x 27 x 3.75	3
5.75	0.144	11.25	0.75	1.75	10	1	0.75 x 27 x 3.75	3.25
5.75	0.229	11.25	0.75	1.75	10	1	0.75 x 27 x 3.75	3.25
6.5	0.091	12.0625	0.75	1.75	11	1	0.75 x 27 x 3.75	3.25
6.5	0.144	12.0625	0.75	1.75	11	1	0.75 x 27 x 3.75	3.25
6.5	0.229	12.0625	0.75	1.75	11	1	0.75 x 27 x 3.75	3.25
7	0.091	12.0625	0.75	1.75	11	0.75	0.75 x 27 x 3.75	3.25
7	0.144	12.0625	0.75	1.75	11	0.75	0.75 x 27 x 3.75	3.25
7	0.299	12.0625	0.75	1.75	11	0.75	0.75 x 27 x 3.75	3.25



HOW TO ORDER



SHAFT DETAILS

RF-A PEDESTRIAN METAL POLE

RF ALUMINIUM // Pole Details

Nominal Mounting Height (ft)	Catalog Code	Alloy	Butt (in)	Tip (in)	Wall Thickness (in)	Handhole	Wt. (lbs) *
10	RF-A-10-5.75-0.091	5052-H32	5.75	4.35	0.091	3" x 5" Reinforced (MIN 9" AG)	24
	RF-A-10-5.75-0.144	5052-H32	5.75	4.35	0.144	3" x 5" Reinforced (MIN 9" AG)	37
	RF-A-10-5.75-0.229	5052-H32	5.75	4.35	0.229	3" x 5" Reinforced (MIN 9" AG)	52
	RF-A-10-6.5-0.091	5052-H32	6.5	5.1	0.091	3" x 5" Reinforced (MIN 14" AG)	31
	RF-A-10-6.5-0.144	5052-H32	6.5	5.1	0.144	3" x 5" Reinforced (MIN 14" AG)	42
	RF-A-10-6.5-0.229	5052-H32	6.5	5.1	0.229	3" x 5" Reinforced (MIN 14" AG)	60
11	RF-A-11-5.75-0.091	5052-H32	5.75	4.21	0.091	3" x 5" Reinforced (MIN 9" AG)	25
	RF-A-11-5.75-0.144	5052-H32	5.75	4.21	0.144	3" x 5" Reinforced (MIN 9" AG)	39
	RF-A-11-5.75-0.229	5052-H32	5.75	4.21	0.229	3" x 5" Reinforced (MIN 9" AG)	55
	RF-A-11-6.5-0.091	5052-H32	6.5	4.96	0.091	3" x 5" Reinforced (MIN 14" AG)	33
	RF-A-11-6.5-0.144	5052-H32	6.5	4.96	0.144	3" x 5" Reinforced (MIN 14" AG)	45
	RF-A-11-6.5-0.229	5052-H32	6.5	4.96	0.229	3" x 5" Reinforced (MIN 14" AG)	64
12	RF-A-12-5.75-0.091	5052-H32	5.75	4.07	0.091	3" x 5" Reinforced (MIN 9" AG)	27
	RF-A-12-5.75-0.144	5052-H32	5.75	4.07	0.144	3" x 5" Reinforced (MIN 9" AG)	41
	RF-A-12-5.75-0.229	5052-H32	5.75	4.07	0.229	3" x 5" Reinforced (MIN 9" AG)	58
	RF-A-12-6.5-0.091	5052-H32	6.5	4.82	0.091	3" x 5" Reinforced (MIN 14" AG)	34
	RF-A-12-6.5-0.144	5052-H32	6.5	4.82	0.144	3" x 5" Reinforced (MIN 14" AG)	47
	RF-A-12-6.5-0.229	5052-H32	6.5	4.82	0.229	3" x 5" Reinforced (MIN 14" AG)	68
13	RF-A-13-6.5-0.091	5052-H32	6.5	4.68	0.091	3" x 5" Reinforced (MIN 14" AG)	36
	RF-A-13-6.5-0.144	5052-H32	6.5	4.68	0.144	3" x 5" Reinforced (MIN 14" AG)	50
	RF-A-13-6.5-0.229	5052-H32	6.5	4.68	0.229	3" x 5" Reinforced (MIN 14" AG)	72
14	RF-A-14-6.5-0.091	5052-H32	6.5	4.54	0.091	3" x 5" Reinforced (MIN 14" AG)	37
	RF-A-14-6.5-0.144	5052-H32	6.5	4.54	0.144	3" x 5" Reinforced (MIN 14" AG)	52
	RF-A-14-6.5-0.229	5052-H32	6.5	4.54	0.229	3" x 5" Reinforced (MIN 14" AG)	75
	RF-A-14-7-0.091	5052-H32	7	5.04	0.091	3" x 5" Reinforced (MIN 14" AG)	40
	RF-A-14-7-0.144	5052-H32	7	5.04	0.144	3" x 5" Reinforced (MIN 14" AG)	56
	RF-A-14-7-0.229	5052-H32	7	5.04	0.229	3" x 5" Reinforced (MIN 14" AG)	81
15	RF-A-15-6.5-0.091	5052-H32	6.5	4.4	0.091	3" x 5" Reinforced (MIN 14" AG)	39
	RF-A-15-6.5-0.144	5052-H32	6.5	4.4	0.144	3" x 5" Reinforced (MIN 14" AG)	55
	RF-A-15-6.5-0.229	5052-H32	6.5	4.4	0.229	3" x 5" Reinforced (MIN 14" AG)	79
	RF-A-15-7-0.091	5052-H32	7	4.9	0.091	3" x 5" Reinforced (MIN 14" AG)	42
	RF-A-15-7-0.144	5052-H32	7	4.9	0.144	3" x 5" Reinforced (MIN 14" AG)	59
	RF-A-15-7-0.229	5052-H32	7	4.9	0.229	3" x 5" Reinforced (MIN 14" AG)	85
16	RF-A-16-6.5-0.144	5052-H32	6.5	4.26	0.144	3" x 5" Reinforced (MIN 14" AG)	57.0
	RF-A-16-6.5-0.229	5052-H32	6.5	4.26	0.229	3" x 5" Reinforced (MIN 14" AG)	83.0
	RF-A-16-7-0.091	5052-H32	7	4.76	0.091	3" x 5" Reinforced (MIN 14" AG)	43.0
	RF-A-16-7-0.144	5052-H32	7	4.76	0.144	3" x 5" Reinforced (MIN 14" AG)	61.0
	RF-A-16-7-0.229	5052-H32	7	4.76	0.229	3" x 5" Reinforced (MIN 14" AG)	89.0
17	RF-A-17-6.5-0.144	5052-H32	6.5	4.12	0.144	3" x 5" Reinforced (MIN 14" AG)	59.0
	RF-A-17-6.5-0.229	5052-H32	6.5	4.12	0.229	3" x 5" Reinforced (MIN 14" AG)	86.0
	RF-A-17-7-0.144	5052-H32	7	4.62	0.144	3" x 5" Reinforced (MIN 14" AG)	64.0
	RF-A-17-7-0.229	5052-H32	7	4.62	0.229	3" x 5" Reinforced (MIN 14" AG)	93.0
18	RF-A-18-7-0.144	5052-H32	7	4.48	0.144	3" x 5" Reinforced (MIN 14" AG)	66.0
	RF-A-18-7-0.229	5052-H32	7	4.48	0.229	3" x 5" Reinforced (MIN 14" AG)	97.0

* Weight includes the pole shaft and baseplate.

SHAFT LOADING

RF-A PEDESTRIAN METAL POLE

RF ALUMINUM // Loading	Nominal Mounting Height (ft)	Catalog Code	Design Information // AASHTO LTS-6, 2013 **									
			90 MPH		100 MPH		110 MPH		120 MPH		150 MPH	
			Max EPA (sq ft)	Max Load (lbs)	Max EPA (sq ft)	Max Load (lbs)	Max EPA (sq ft)	Max Load (lbs)	Max EPA (sq ft)	Max Load (lbs)	Max EPA (sq ft)	Max Load (lbs)
10	RF-A-10-5.75-0.091	5.6	200	4.2	200	3.3	200	2.7	200	1.5	200	
	RF-A-10-5.75-0.144	9.0	200	7.0	200	5.7	200	4.6	200	2.8	200	
	RF-A-10-5.75-0.229	11.6	300	9.2	200	7.4	200	6.2	200	3.8	200	
	RF-A-10-6.5-0.091	7.8	200	6.2	200	5.0	200	4.1	200	2.4	200	
	RF-A-10-6.5-0.144	12.8	300	10.3	300	8.5	200	7.0	200	4.3	200	
	RF-A-10-6.5-0.229	16.8	300	13.5	300	11.0	300	9.2	200	5.7	200	
11	RF-A-11-5.75-0.091	4.7	200	3.4	200	2.6	200	2.1	200	1.1	200	
	RF-A-11-5.75-0.144	7.8	200	5.9	200	4.7	200	3.8	200	2.2	200	
	RF-A-11-5.75-0.229	10.0	300	7.9	200	6.3	200	5.2	200	3.1	200	
	RF-A-11-6.5-0.091	6.6	200	5.2	200	4.1	200	3.4	200	1.9	200	
	RF-A-11-6.5-0.144	11.1	300	8.9	200	7.2	200	6.0	200	3.6	200	
	RF-A-11-6.5-0.229	14.7	300	11.7	300	9.7	200	8.0	200	4.9	200	
12	RF-A-12-5.75-0.091	3.9	200	2.7	200	2.0	200	1.5	200	0.7	200	
	RF-A-12-5.75-0.144	6.6	200	5.0	200	3.9	200	3.1	200	1.8	200	
	RF-A-12-5.75-0.229	8.9	200	6.8	200	5.4	200	4.4	200	2.6	200	
	RF-A-12-6.5-0.091	5.6	200	4.3	200	3.4	200	2.7	200	1.5	200	
	RF-A-12-6.5-0.144	9.7	200	7.7	200	6.2	200	5.1	200	3.1	200	
	RF-A-12-6.5-0.229	12.8	300	10.2	300	8.4	200	6.9	200	4.2	200	
13	RF-A-13-6.5-0.091	4.7	200	3.5	200	2.7	200	2.2	200	1.1	200	
	RF-A-13-6.5-0.144	8.4	200	6.6	200	5.3	200	4.3	200	2.5	200	
	RF-A-13-6.5-0.229	11.3	300	9.0	200	7.3	200	6.0	200	3.6	200	
14	RF-A-14-6.5-0.091	3.9	200	2.8	200	2.2	200	1.7	200	0.8	200	
	RF-A-14-6.5-0.144	7.3	200	5.6	200	4.5	200	3.6	200	2.1	200	
	RF-A-14-6.5-0.229	10.0	300	7.9	200	6.3	200	5.2	200	3.1	200	
	RF-A-14-7-0.091	5.1	200	3.9	200	3.1	200	2.4	200	1.3	200	
	RF-A-14-7-0.144	9.2	200	7.2	200	5.8	200	4.8	200	2.8	200	
	RF-A-14-7-0.229	12.5	300	9.9	200	8.1	200	6.6	200	4.0	200	
15	RF-A-15-6.5-0.091	3.2	200	2.2	200	1.6	200	1.2	200	0.5	200	
	RF-A-15-6.5-0.144	6.4	200	4.8	200	3.7	200	3.0	200	1.7	200	
	RF-A-15-6.5-0.229	8.9	200	6.9	200	5.5	200	4.5	200	2.6	200	
	RF-A-15-7-0.091	4.3	200	3.2	200	2.5	200	1.9	200	0.9	200	
	RF-A-15-7-0.144	8.0	200	6.3	200	5.0	200	4.1	200	2.3	200	
	RF-A-15-7-0.229	11.1	300	8.9	200	7.1	200	5.8	200	3.4	200	
16	RF-A-16-6.5-0.144	5.5	200	4.0	200	3.1	200	2.4	200	1.3	200	
	RF-A-16-6.5-0.229	7.9	200	6.0	200	4.7	200	3.8	200	2.1	200	
	RF-A-16-7-0.091	3.5	200	2.5	200	1.9	200	1.4	200	0.6	200	
	RF-A-16-7-0.144	7.0	200	5.4	200	4.3	200	3.5	200	1.9	200	
	RF-A-16-7-0.229	10.0	300	7.9	200	6.3	200	5.1	200	3.0	200	
17	RF-A-17-6.5-0.144	4.7	200	3.3	200	2.4	200	1.9	200	0.9	200	
	RF-A-17-6.5-0.229	6.9	200	5.1	200	3.9	200	3.2	200	1.7	200	
	RF-A-17-7-0.144	6.0	200	4.6	200	3.6	200	2.8	200	1.5	200	
	RF-A-17-7-0.229	8.8	200	6.8	200	5.5	200	4.4	200	2.5	200	
18	RF-A-18-7-0.144	5.2	200	3.8	200	2.9	200	2.3	200	1.1	200	
	RF-A-18-7-0.229	7.8	200	5.9	200	4.7	200	3.8	200	2.1	200	

** EPA represents the Effective Projected Area of the attachments on the pole. Designs are limited to post top luminaires or attachments located at or below the mounting height. Consult factory for poles supporting attachments located above the mounting height.

BASE COMPATIBILITY

RF-A PEDESTRIAN METAL POLE

Pole Butt Size	Split Bases								
	KSB10	KSB11	KSB16	KSB19	KSB20	KSB52	KSB70	KSB76	KSB77
5.75	Compatible	Incompatible	Compatible	Compatible	Incompatible	Compatible	Compatible	Incompatible	Incompatible
6.5	Incompatible	Incompatible	Compatible	Compatible	Incompatible	Compatible	Compatible	Incompatible	Compatible
7	Incompatible	Incompatible	Compatible	Compatible	Incompatible	Incompatible	Compatible	Incompatible	Compatible