

RE-S // ROUND NON-TAPERED STEEL

ROADWAY METAL POLE



King Luminaire

POLE SPECIFICATIONS

MATERIAL:

Round Non-Tapered Steel

POLE HEIGHT:

19' - 28'

OPTIONS:

GFI - Ground Fault Receptacle
 BA - Banner Arms
 FPH - Flower Pot Holder
 FH - Flag Holder

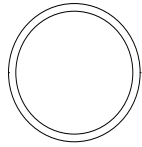
GRADE:

A500

FINISH:

Available in textured or smooth.

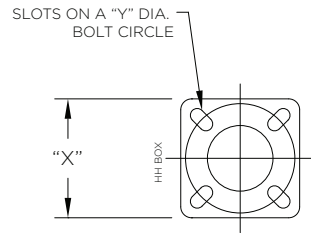
CROSS SECTION:



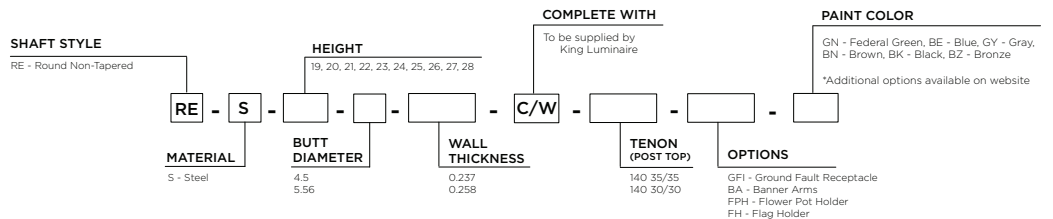
Round Non-Tapered (RE)

BASEPLATE DETAILS

Pole		Baseplate			Bolt Circle		Anchor Bolts	
Butt Diameter (in)	Wall Thickness (in)	"X" Square (in)	Thickness (in)	Corner Radius (in)	"Y" Dia (in)	+/- (in)	Dia x Length x Hook (in)	Projection (in)
4.5	0.237	11.25	0.75	1.75	10	1	0.75 x 27 x 3.75	3.25
5.56	0.258	11.25	1	1.75	10	1	1 x 36 x 5	4.25



HOW TO ORDER



SHAFT DETAILS

RE-S ROADWAY METAL POLE

RE Steel // Pole Details

Nominal Mounting Height (ft)	Catalog Code	Grade	Butt (in)	Tip (in)	Wall Thickness (in)	Handhole	Wt. (lbs) *
19	RE-S-19-4.5-0.237	A500	4.50	4.50	0.237	2-1/2" x 5" (MIN 9" AG)	233.0
	RE-S-19-5.56-0.258	A500	5.56	5.56	0.258	3" x 5" Reinforced (MIN 9" AG)	315.0
20	RE-S-20-4.5-0.237	A500	4.50	4.50	0.237	2-1/2" x 5" (MIN 9" AG)	244.0
	RE-S-20-5.56-0.258	A500	5.56	5.56	0.258	3" x 5" Reinforced (MIN 9" AG)	329.0
21	RE-S-21-5.56-0.258	A500	5.56	5.56	0.258	3" x 5" Reinforced (MIN 9" AG)	344.0
22	RE-S-22-5.56-0.258	A500	5.56	5.56	0.258	3" x 5" Reinforced (MIN 9" AG)	359.0
23	RE-S-23-5.56-0.258	A500	5.56	5.56	0.258	3" x 5" Reinforced (MIN 9" AG)	373.0
24	RE-S-24-5.56-0.258	A500	5.56	5.56	0.258	3" x 5" Reinforced (MIN 9" AG)	388.0
25	RE-S-25-5.56-0.258	A500	5.56	5.56	0.258	3" x 5" Reinforced (MIN 9" AG)	403.0
26	RE-S-26-5.56-0.258	A500	5.56	5.56	0.258	3" x 5" Reinforced (MIN 9" AG)	417.0
27	RE-S-27-5.56-0.258	A500	5.56	5.56	0.258	3" x 5" Reinforced (MIN 9" AG)	432.0
28	RE-S-28-5.56-0.258	A500	5.56	5.56	0.258	3" x 5" Reinforced (MIN 9" AG)	447.0

* Weight includes the pole shaft and baseplate.

SHAFT LOADING

RE Steel // Loading

Nominal Mounting Height (ft)	Catalog Code	Design Information // AASHTO LTS-6, 2013 **									
		90 MPH		100 MPH		110 MPH		120 MPH		150 MPH	
		Max EPA (sq ft)	Max Load (lbs)	Max EPA (sq ft)	Max Load (lbs)	Max EPA (sq ft)	Max Load (lbs)	Max EPA (sq ft)	Max Load (lbs)	Max EPA (sq ft)	Max Load (lbs)
19	RE-S-19-4.5-0.237	4.0	200	2.5	200	1.7	200	1.2	200	0.5	200
	RE-S-19-5.56-0.258	13.8	300	10.9	300	9.5	200	7.8	200	4.7	200
20	RE-S-20-4.5-0.237	3.0	200	1.7	200	1.0	200	0.6	200	-	-
	RE-S-20-5.56-0.258	11.9	300	9.9	200	8.3	200	6.8	200	4.0	200
21	RE-S-21-5.56-0.258	10.3	300	9.0	200	7.2	200	5.8	200	3.4	200
22	RE-S-22-5.56-0.258	9.9	200	7.7	200	6.2	200	5.0	200	2.8	200
23	RE-S-23-5.56-0.258	8.5	200	6.6	200	5.2	200	4.2	200	2.3	200
24	RE-S-24-5.56-0.258	7.2	200	5.5	200	4.3	200	3.4	200	1.8	200
25	RE-S-25-5.56-0.258	6.0	200	4.5	200	3.5	200	2.7	200	1.3	200
26	RE-S-26-5.56-0.258	4.8	200	3.6	200	2.7	200	2.0	200	0.8	200
27	RE-S-27-5.56-0.258	3.7	200	2.7	200	1.9	200	1.4	200	-	-
28	RE-S-28-5.56-0.258	2.7	200	1.8	200	1.2	200	0.7	200	-	-

** EPA represents the Effective Projected Area of the attachments on the pole. Designs are limited to post top luminaires or attachments located at or below the mounting height. Consult factory for poles supporting attachments located above the mounting height.

BASE COMPATIBILITY

Pole Butt Size	Split Bases									
	KSB10	KSB11	KSB16	KSB19	KSB20	KSB52	KSB70	KSB76	KSB77	
4										
5.56										

06-04-2024