



K601D COACH LANTERN - LED

The K601D is a cost effective coach lantern with a historical appearance that offers high performance Advanced LED Technology with our signature P4 optical system. It has excellent spacing and low glare providing a perfect solution for city streets, parks, schools, and commercial areas.



**King
Luminaire**

PRODUCT SPECIFICATIONS

LED ENGINE

Light engine shall include an array of solid state Cree X-Series high power LEDs (light emitting diodes). The emitters shall be mounted to a metal core circuit board using SMT technology. The LEDs and circuit boards shall then be mounted to a high performance heat sink.

OPTICS

External light control shall consist of high precision refractive lenses mounted above the LED emitter arrays in such a way to achieve optimum uplight control. The lenses shall also control horizontal light distribution so that Type II, III, IV, or V IESNA distribution patterns are achieved.

LENS

The K601D Coach Lantern shall be available with or without a lens. The lens panels shall be made of clear polycarbonate or clear acrylic.

LUMINAIRE CONSTRUCTION

All cast components shall consist of a heavy cast aluminum. The main body shall act as an enclosure for the LED array and shall be of adequate thickness to give sufficient structural rigidity.

With the post top version, the K601D Coach Lantern shall have a capital which shall have an opening at the base tenon body to allow the luminaire to be mounted to a tenon of 3-1/2" maximum diameter x 3-1/2" maximum length. The luminaire shall be locked in place by means of heavy duty, stainless steel set-screws.

With the pendant version, the K601D Coach Lantern shall be available with multiple mounting options, including the KPL10, KPL11, KPL20, KPL21, KPL30, KPL31, and KPL40.

With the side mount version, the K601D Coach Lantern shall be mounted with a Side Mounted scroll arm (sold separately). Please contact King Luminaire for more details and specifications.

DRIVER

The LED universal dimmable driver shall be DALI-2 D4i and capable of 108 - 305V or 249 - 528V input voltage, greater than 0.9 power factor, and less than 20% total harmonic distortion. Each LED system shall come with built-in, high-capacity surge protection, in addition to a complementary SPD added by King Luminaire, designed to withstand up to 20kV/10kA of transient line surge as per IEEE C62.41.2 C High and ANSI C136.2 Extreme Level (20kV/10kA). An in-line ferrite choke shall be utilized to provide protection against EFT's. The driver assembly shall work with service feeds powered with one hot wire and a neutral or two hot wires. The case temperature of the driver shall range from -40°C up to 70°C. The driver assembly shall be mounted on a heavy duty fabricated aluminum mounting bracket.

PHOTOMETRICS

Fixtures shall be tested to IESNA LM79 specifications. These reports are to be available upon request.

CHROMATICITY

High output LEDs shall come standard at 2700K, 3000K, & 4000K (+/- 300K) with a minimum nominal 70 CRI. Additional CCT emitters are to be available upon request.

LUMEN MAINTENANCE

Reported (TM21) and Calculated (L70) reports are to be available upon request with a minimum calculated value of 100,000 hrs.

WIRING

All internal wiring and connections shall be completed so that it will be necessary only to attach the incoming supply connectors to Mate-N-Lok connectors or to a terminal block. Mate-N-Lok shall be certified for 600V operation. Internal wire connectors shall be crimp connector only and rated at 1000V and 105°C. All wiring to be CSA certified and/or UL listed, type SFF-2, SEWF-2, or SEW-2 No. 14 gauge, 105°C, 600V.

THERMALS

Fixtures shall be tested by a DOE sanctioned test facility to determine the maximum in-situ solder-point or junction-point temperatures of the LED emitters. This report is to be available upon request.

FINISH

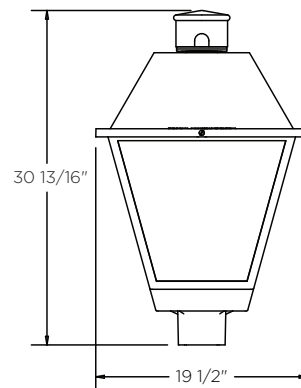
Housing shall be finished with a 13 step KingCoat™ SuperDurable polyester TGIC powder coat. Standard colors shall include strobe white, brown metal, marina blue, gate gray, Chicago bronze, standard gold, standard black, federal green, and rain forest. Please see our website for a complete list of colors. RAL and custom color matches are to be available.

MISCELLANEOUS

All exterior hardware and fasteners, wholly or partly exposed, shall be stainless steel alloy. All internal fasteners shall be stainless steel or zinc coated steel. All remaining internal hardware shall be stainless steel, aluminum alloy, or zinc coated steel.

WARRANTY

The K601D Coach Lantern LED luminaire shall come with a 7 year limited warranty.



CERTIFICATION:

CSA US Listed
Suitable for wet locations
ISO 9001
IP66
ARRA Compliant
LM79 / LM80 Compliant

DRIVER INFO:

>0.9 Power Factor
<20% Total Harmonic Distortion
120 - 277V & 347 - 480V
-40°C Min. Case Temperature
70°C Max. Case Temperature
Surge Protection: ANSI C136.2 extreme level 20kV/10kA
Dimming Capable

EPA (with Lens):

Post Top:	2.7 sq. ft.
Side Mount:	2.45 sq. ft.
Pendant:	2.45 sq. ft.

FIXTURE WEIGHT (with Lens):

Post Top:	34 lbs
Side Mount:	25 lbs
Pendant:	25 lbs

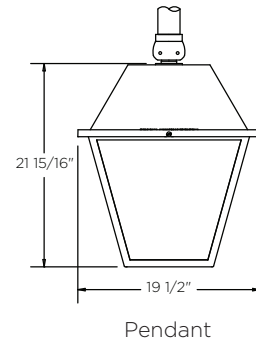
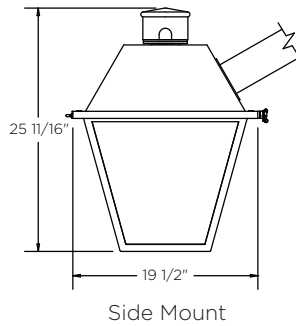
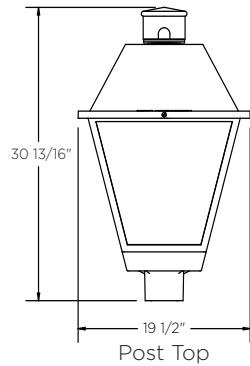


Not all product variations listed on this page are DLC qualified. Visit www.designlights.org/search to confirm qualification. *DarkSky Certification applicable for maximum 3000K CCT. Glass lenses do not apply. Contact King Luminaire for product specifications that are exempt from CSA Certification 06-26-2025

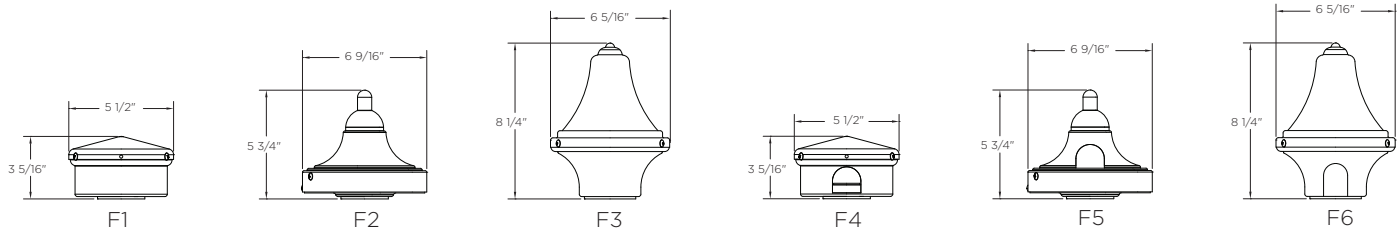
FIXTURE OPTIONS

K601D COACH LANTERN - LED

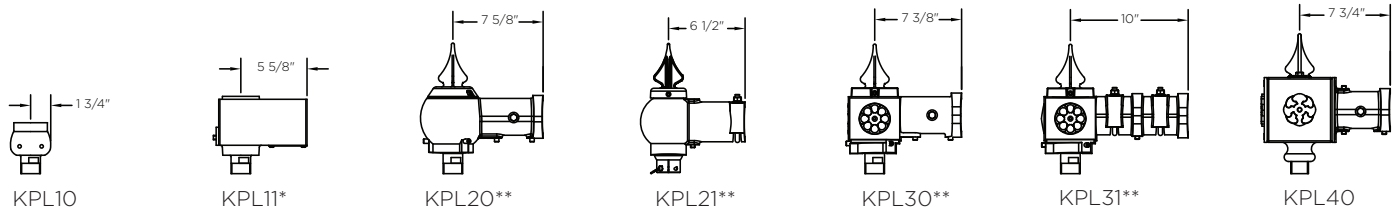
Fixture Formats



Finial Options (Post Top/Side Mount)



Plumbizer/Mounting Options (Pendant)



*Available with PR7

**Available with PR7 or finial

HOW TO ORDER

PAINT COLOR

GN - Federal Green
BE - Blue
GY - Gray
BN - Brown
BK - Black
BZ - Bronze

*Additional options available on website. BK will be provided if blank.

LEVELING DEVICE (P)

Configured separately
*leave blank for post top or side mount versions.

FINIAL (P)

Configured with Leveling Device
*leave blank for post top or side mount versions.

SLIP FITTER (T)

3DT - 3" Ø Tenon

*leave blank for 3 1/2" Ø standard tenon, pendant, or side mount versions.

LIGHT SHAPING

HS3 - 3" Deep x 120° House Side Shield
HS6 - 6" Deep x 120° House Side Shield
LPS - Low Profile Shield
LGD - LED Glare Diffuser (Nimbus Optic)
HS3-LGD - 3" Deep x 120 Degree + Diffusion
HS6-LGD - 6" Deep x 120 Degree + Diffusion

*leave blank if not required

DECORATIVE OPTIONS

AC - Aluminum Candle
GC - Glass Candle
BIRD SPIKE

*leave blank if not required.

LINE VOLTAGE

120V-277V
347V-480V

*Can accommodate a specific voltage within either of these ranges.

CONNECTION

Quick Disconnect is standard. If terminal block is required, please specify TB

WATTAGE SELECTOR

WS - Wattage Selector

*leave blank if not required. Reset to full output prior to utilizing smart Controls.

FINIAL (T/S)

F1, F2, F3, F4, F5, F6

*leave blank for pendant version

PHOTO CONTROL OPTIONS (T/S)

NR - Not Required
PR7 - Photo Receptacle
PE7 - Photo Receptacle and Photo Eye
PBC - Photo Buttoncell

*leave blank for pendant version

WATTAGE

25, 40, 60, 75, 100, 120, 150

SOURCE

SSL - Solid State

IES LIGHTING CLASSIFICATION

II - Type 2
III - Type 3
IV - Type 4
V - Type 5

MOUNTING TYPE

T - Post Top
P - Pendant
S - Side Mount

LUMINAIRE STYLE

K601D - Coach Lantern

OPTICAL OPTIONS

P4 - P4 Optic (Flat Array)

LENS OPTION

AC - Acrylic Clear
AF - Acrylic Frosted
PC - Polycarbonate Clear
NL - No Lens