

FF-S // FLUTED TAPERED STEEL

ROADWAY METAL POLE



King Luminaire

POLE SPECIFICATIONS

MATERIAL:
Fluted Tapered Steel

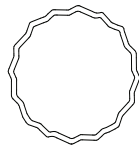
POLE HEIGHT:
19' - 28'

OPTIONS:
GFI - Ground Fault Receptacle
BA - Banner Arms
FPH - Flower Pot Holder
FH - Flag Holder

GRADE:
A36

FINISH:
Available in textured or smooth.

CROSS SECTION:

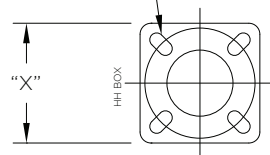


Fluted Tapered (FF)

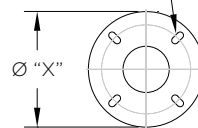
BASEPLATE DETAILS

Pole		Baseplate				Bolt Circle		Anchor Bolts	
Butt Diameter (in)	Wall Thickness (in)	"X" Size (in)	Square or Circle	Thickness (in)	Corner Radius (in)	"Y" Dia (in)	+/- (in)	Dia x Length x Hook (in)	Projection (in)
7	0.12	12.0625	Square	1	1.75	11	0.75	1 x 36 x 5	4.25
7	0.179	12.0625	Square	1	1.75	11	0.75	1 x 36 x 5	4.25
8	0.12	12.0625	Square	1	1.75	11.6875	0.5625	1 x 36 x 5	4.25
8	0.179	12.0625	Square	1	1.75	11.6875	0.5625	1 x 36 x 5	4.25
9	0.12	15.5625	Circle	1	-	12.5	0	1 x 36 x 5	4.25
9	0.179	15.5625	Circle	1	-	12.5	0	1 x 36 x 5	4.25
10	0.12	14	Square	1	2	14.25	0.75	1 x 36 x 5	4.25

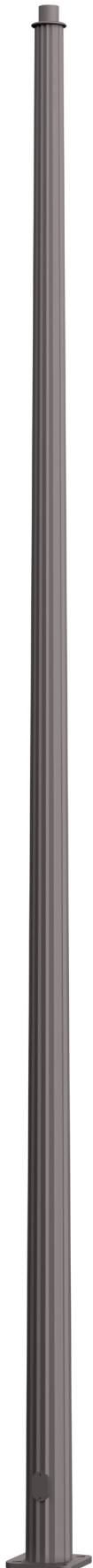
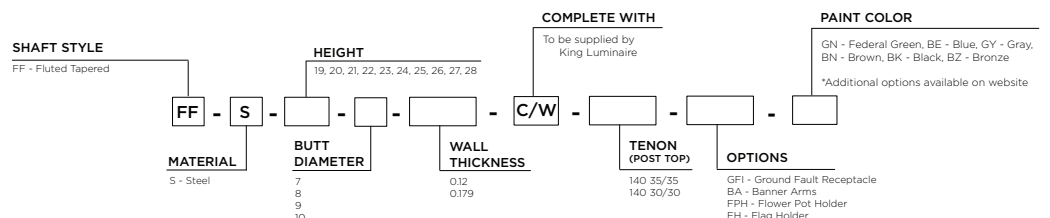
SLOTS ON A "Y" DIA. BOLT CIRCLE



SLOTS ON A "Y" DIA. BOLT CIRCLE



HOW TO ORDER



SHAFT DETAILS

FF-S ROADWAY METAL POLE

FF Steel // Pole Details

Nominal Mounting Height (ft)	Catalog Code	Grade	Butt (in)	Tip (in)	Wall Thickness (in)	Handhole	Wt. (lbs) *
19	FF-S-19-7-0.12	A36	7	4.34	0.12	3" x 5" Reinforced (MIN 14" AG)	170.0
	FF-S-19-7-0.179	A36	7	4.34	0.179	3" x 5" Reinforced (MIN 14" AG)	231.0
20	FF-S-20-7-0.12	A36	7	4.2	0.12	3" x 5" Reinforced (MIN 14" AG)	175.0
	FF-S-20-7-0.179	A36	7	4.2	0.179	3" x 5" Reinforced (MIN 14" AG)	238.0
	FF-S-20-8-0.12	A36	8	5.2	0.12	3" x 5" Reinforced (MIN 14" AG)	199.0
	FF-S-20-8-0.179	A36	8	5.2	0.179	3" x 5" Reinforced (MIN 14" AG)	274.0
21	FF-S-21-7-0.12	A36	7	4.06	0.12	3" x 5" Reinforced (MIN 14" AG)	180.0
	FF-S-21-7-0.179	A36	7	4.06	0.179	3" x 5" Reinforced (MIN 14" AG)	245.0
	FF-S-21-8-0.12	A36	8	5.06	0.12	3" x 5" Reinforced (MIN 14" AG)	205.0
	FF-S-21-8-0.179	A36	8	5.06	0.179	3" x 5" Reinforced (MIN 14" AG)	283.0
	FF-S-21-9-0.12	A36	9	6.06	0.12	3" x 5" Reinforced (MIN 16" AG)	244.0
	FF-S-21-9-0.179	A36	9	6.06	0.179	3" x 5" Reinforced (MIN 16" AG)	334.0
22	FF-S-22-8-0.12	A36	8	4.92	0.12	3" x 5" Reinforced (MIN 14" AG)	211.0
	FF-S-22-8-0.179	A36	8	4.92	0.179	3" x 5" Reinforced (MIN 14" AG)	292.0
	FF-S-22-9-0.12	A36	9	5.92	0.12	3" x 5" Reinforced (MIN 16" AG)	251.0
	FF-S-22-9-0.179	A36	9	5.92	0.179	3" x 5" Reinforced (MIN 16" AG)	345.0
23	FF-S-23-8-0.12	A36	8	4.78	0.12	3" x 5" Reinforced (MIN 14" AG)	217.0
	FF-S-23-8-0.179	A36	8	4.78	0.179	3" x 5" Reinforced (MIN 14" AG)	301.0
	FF-S-23-9-0.12	A36	9	5.78	0.12	3" x 5" Reinforced (MIN 16" AG)	258.0
	FF-S-23-9-0.179	A36	9	5.78	0.179	3" x 5" Reinforced (MIN 16" AG)	355.0
24	FF-S-24-8-0.12	A36	8	4.64	0.12	3" x 5" Reinforced (MIN 14" AG)	223.0
	FF-S-24-8-0.179	A36	8	4.64	0.179	3" x 5" Reinforced (MIN 14" AG)	309.0
	FF-S-24-9-0.12	A36	9	5.64	0.12	3" x 5" Reinforced (MIN 16" AG)	264.0
	FF-S-24-9-0.179	A36	9	5.64	0.179	3" x 5" Reinforced (MIN 16" AG)	365.0
25	FF-S-25-8-0.12	A36	8	4.5	0.12	3" x 5" Reinforced (MIN 14" AG)	228.0
	FF-S-25-8-0.179	A36	8	4.5	0.179	3" x 5" Reinforced (MIN 14" AG)	317.0
	FF-S-25-9-0.12	A36	9	5.5	0.12	3" x 5" Reinforced (MIN 16" AG)	271.0
	FF-S-25-9-0.179	A36	9	5.5	0.179	3" x 5" Reinforced (MIN 16" AG)	375.0
26	FF-S-26-8-0.12	A36	8	4.36	0.12	3" x 5" Reinforced (MIN 14" AG)	233.0
	FF-S-26-8-0.179	A36	8	4.36	0.179	3" x 5" Reinforced (MIN 14" AG)	324.0
	FF-S-26-9-0.12	A36	9	5.36	0.12	3" x 5" Reinforced (MIN 16" AG)	278.0
	FF-S-26-9-0.179	A36	9	5.36	0.179	3" x 5" Reinforced (MIN 16" AG)	384.0
27	FF-S-27-8-0.12	A36	8	4.22	0.12	3" x 5" Reinforced (MIN 14" AG)	238.0
	FF-S-27-8-0.179	A36	8	4.22	0.179	3" x 5" Reinforced (MIN 14" AG)	332.0
	FF-S-27-9-0.12	A36	9	5.22	0.12	3" x 5" Reinforced (MIN 16" AG)	284.0
	FF-S-27-9-0.179	A36	9	5.22	0.179	3" x 5" Reinforced (MIN 16" AG)	393.0
	FF-S-27-10-0.12	A36	10	6.22	0.12	3" x 5" Reinforced (MIN 20" AG)	318.0
28	FF-S-28-8-0.12	A36	8	4.08	0.12	3" x 5" Reinforced (MIN 14" AG)	243.0
	FF-S-28-8-0.179	A36	8	4.08	0.179	3" x 5" Reinforced (MIN 14" AG)	339.0
	FF-S-28-9-0.12	A36	9	5.08	0.12	3" x 5" Reinforced (MIN 16" AG)	290.0
	FF-S-28-9-0.179	A36	9	5.08	0.179	3" x 5" Reinforced (MIN 16" AG)	402.0
	FF-S-28-10-0.12	A36	10	6.08	0.12	3" x 5" Reinforced (MIN 20" AG)	326.0

* Weight includes the pole shaft and baseplate.

SHAFT LOADING

FF-S ROADWAY METAL POLE

FF Steel // Loading	Nominal Mounting Height (ft)	Catalog Code	Design Information // AASHTO LTS-6, 2013 **									
			90 MPH		100 MPH		110 MPH		120 MPH		150 MPH	
			Max EPA (sq ft)	Max Load (lbs)	Max EPA (sq ft)	Max Load (lbs)	Max EPA (sq ft)	Max Load (lbs)	Max EPA (sq ft)	Max Load (lbs)	Max EPA (sq ft)	Max Load (lbs)
19	FF-S-19-7-0.12	20.3	400	16.2	300	13.1	300	10.8	300	6.7	200	
	FF-S-19-7-0.179	29.5	400	23.4	400	19.3	300	16.0	300	9.9	200	
20	FF-S-20-7-0.12	18.8	300	14.7	300	11.9	300	9.9	200	6.0	200	
	FF-S-20-7-0.179	27.1	400	21.5	400	17.6	300	14.6	300	9.1	200	
	FF-S-20-8-0.12	26.2	400	20.9	400	17.2	300	14.3	300	8.8	200	
	FF-S-20-8-0.179	38.3	500	30.8	500	25.4	400	21.1	400	13.2	300	
21	FF-S-21-7-0.12	17.3	300	13.4	300	10.7	300	9.0	200	5.4	200	
	FF-S-21-7-0.179	25.0	400	19.9	300	16.1	300	13.3	300	8.3	200	
	FF-S-21-8-0.12	24.1	400	19.4	300	15.8	300	13.1	300	8.0	200	
	FF-S-21-8-0.179	35.4	500	28.6	400	23.4	400	19.5	300	12.1	300	
	FF-S-21-9-0.12	32.5	500	26.2	400	21.4	400	17.9	300	10.7	300	
	FF-S-21-9-0.179	39.8	500	31.9	500	26.2	400	21.8	400	13.3	300	
22	FF-S-22-8-0.12	22.3	400	17.9	300	14.5	300	12.0	300	7.3	200	
	FF-S-22-8-0.179	32.8	500	26.5	400	21.6	400	18.1	300	11.2	300	
	FF-S-22-9-0.12	30.1	500	24.3	400	19.9	300	16.6	300	9.9	200	
	FF-S-22-9-0.179	37.0	500	29.8	400	24.4	400	20.3	400	12.3	300	
23	FF-S-23-8-0.12	20.5	400	16.5	300	13.4	300	11.0	300	6.7	200	
	FF-S-23-8-0.179	30.5	500	24.5	400	20.0	400	16.8	300	10.3	300	
	FF-S-23-9-0.12	28.2	400	22.5	400	18.5	300	15.3	300	9.2	200	
	FF-S-23-9-0.179	34.5	500	27.8	400	22.7	400	18.9	300	11.4	300	
24	FF-S-24-8-0.12	19.3	300	15.2	300	12.3	300	10.1	300	6.0	200	
	FF-S-24-8-0.179	28.6	400	22.7	400	18.7	300	15.5	300	9.5	200	
	FF-S-24-9-0.12	26.3	400	20.9	400	17.2	300	14.2	300	8.5	200	
	FF-S-24-9-0.179	32.3	400	25.9	400	21.2	400	17.6	300	10.6	300	
25	FF-S-25-8-0.12	17.8	300	13.9	300	11.2	300	9.4	200	5.5	200	
	FF-S-25-8-0.179	26.6	400	21.1	400	17.3	300	14.3	300	8.8	200	
	FF-S-25-9-0.12	24.4	400	19.7	300	16.0	300	13.2	300	7.8	200	
	FF-S-25-9-0.179	30.2	500	24.2	400	19.9	300	16.4	300	9.9	200	
26	FF-S-26-8-0.12	16.5	300	12.8	300	10.3	300	8.6	200	4.9	200	
	FF-S-26-8-0.179	24.8	400	19.7	300	16.0	300	13.2	300	8.1	200	
	FF-S-26-9-0.12	22.7	400	18.3	300	14.8	300	12.2	300	7.2	200	
	FF-S-26-9-0.179	28.4	400	22.6	400	18.5	300	15.3	300	9.2	200	
27	FF-S-27-8-0.12	15.3	300	11.8	300	9.6	200	7.8	200	4.4	200	
	FF-S-27-8-0.179	23.1	400	18.4	300	14.8	300	12.2	300	7.4	200	
	FF-S-27-9-0.12	21.1	400	17.0	300	13.7	300	11.3	300	6.6	200	
	FF-S-27-9-0.179	26.6	400	21.1	400	17.3	300	14.3	300	8.5	200	
	FF-S-27-10-0.12	28.4	400	22.6	400	18.5	300	15.2	300	8.8	200	
28	FF-S-28-8-0.12	14.1	300	10.8	300	8.7	200	7.1	200	4.0	200	
	FF-S-28-8-0.179	21.6	400	17.1	300	13.7	300	11.3	300	6.8	200	
	FF-S-28-9-0.12	19.9	300	15.8	300	12.7	300	10.4	300	6.1	200	
	FF-S-28-9-0.179	24.8	400	19.9	300	16.1	300	13.3	300	7.8	200	
	FF-S-28-10-0.12	26.6	400	21.1	400	17.3	300	14.2	300	8.1	200	

** EPA represents the Effective Projected Area of the attachments on the pole. Designs are limited to post top luminaires or attachments located at or below the mounting height. Consult factory for poles supporting attachments located above the mounting height.

BASE COMPATIBILITY

FF-S ROADWAY METAL POLE

Pole Butt Size	Split Bases								
	KSB10	KSB11	KSB16	KSB19	KSB20	KSB52	KSB70	KSB76	KSB77
7									
8									
9									
10									