

# FF-S // FLUTED TAPERED STEEL

PEDESTRIAN METAL POLE



**King Luminaire**

## POLE SPECIFICATIONS

**MATERIAL:**  
Fluted Tapered Steel

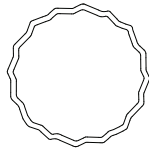
**POLE HEIGHT:**  
10' - 18'

**OPTIONS:**  
GFI - Ground Fault Receptacle  
BA - Banner Arms  
FPH - Flower Pot Holder  
FH - Flag Holder

**GRADE:**  
A36

**FINISH:**  
Available in textured or smooth.

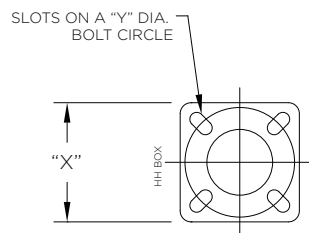
### CROSS SECTION:



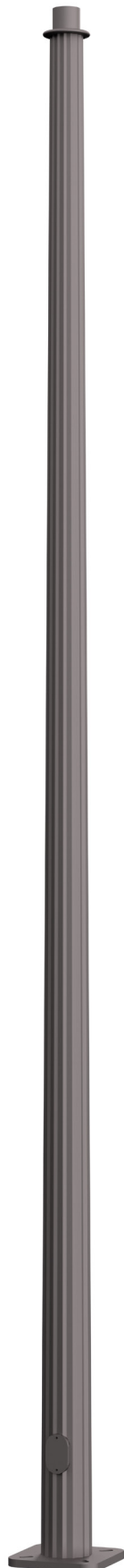
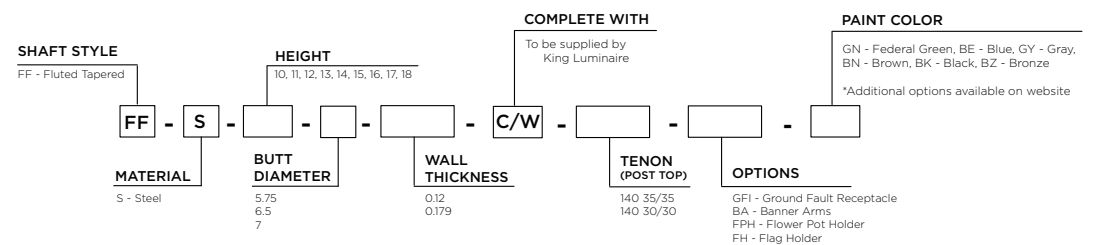
Fluted Tapered (FF)

## BASEPLATE DETAILS

Pole		Baseplate			Bolt Circle		Anchor Bolts	
Butt Diameter (in)	Wall Thickness (in)	"X" Square (in)	Thickness (in)	Corner Radius (In)	"Y" Dia (in)	+/- (in)	Dia x Length x Hook (in)	Projection (in)
5.75	0.12	11.25	1	1.75	10	1	1 x 36 x 5	4.25
5.75	0.179	11.25	1	1.75	10	1	1 x 36 x 5	4.25
6.5	0.12	12.0625	1	1.75	11	1	1 x 36 x 5	4.25
6.5	0.179	12.0625	1	1.75	11	1	1 x 36 x 5	4.25
7	0.12	12.0625	1	1.75	11	0.75	1 x 36 x 5	4.25
7	0.179	12.0625	1	1.75	11	0.75	1 x 36 x 5	4.25



## HOW TO ORDER



# SHAFT DETAILS

# FF-S PEDESTRIAN METAL POLE

FF Steel // Pole Details	Nominal Mounting Height (ft)	Catalog Code	Grade	Butt (in)	Tip (in)	Wall Thickness (in)	Handhole	Wt. (lbs) *
	10	FF-S-10-5.75-0.12	A36	5.75	4.35	0.12	3" x 5" Reinforced (MIN 9" AG)	96
	FF-S-10-5.75-0.179	A36	5.75	4.35	0.179	3" x 5" Reinforced (MIN 9" AG)	125	
	FF-S-10-6.5-0.12	A36	6.5	5.1	0.12	3" x 5" Reinforced (MIN 14" AG)	111	
	FF-S-10-6.5-0.179	A36	6.5	5.1	0.179	3" x 5" Reinforced (MIN 14" AG)	144	
11	FF-S-11-5.75-0.12	A36	5.75	4.21	0.12	3" x 5" Reinforced (MIN 9" AG)	101	
	FF-S-11-5.75-0.179	A36	5.75	4.21	0.179	3" x 5" Reinforced (MIN 9" AG)	132	
	FF-S-11-6.5-0.12	A36	6.5	4.96	0.12	3" x 5" Reinforced (MIN 14" AG)	117	
	FF-S-11-6.5-0.179	A36	6.5	4.96	0.179	3" x 5" Reinforced (MIN 14" AG)	152	
12	FF-S-12-5.75-0.12	A36	5.75	4.07	0.12	3" x 5" Reinforced (MIN 9" AG)	106	
	FF-S-12-5.75-0.179	A36	5.75	4.07	0.179	3" x 5" Reinforced (MIN 9" AG)	139	
	FF-S-12-6.5-0.12	A36	6.5	4.82	0.12	3" x 5" Reinforced (MIN 14" AG)	123	
	FF-S-12-6.5-0.179	A36	6.5	4.82	0.179	3" x 5" Reinforced (MIN 14" AG)	161	
13	FF-S-13-6.5-0.12	A36	6.5	4.68	0.12	3" x 5" Reinforced (MIN 14" AG)	128	
	FF-S-13-6.5-0.179	A36	6.5	4.68	0.179	3" x 5" Reinforced (MIN 14" AG)	169	
14	FF-S-14-6.5-0.12	A36	6.5	4.54	0.12	3" x 5" Reinforced (MIN 14" AG)	134	
	FF-S-14-6.5-0.179	A36	6.5	4.54	0.179	3" x 5" Reinforced (MIN 14" AG)	177	
	FF-S-14-7-0.12	A36	7	5.04	0.12	3" x 5" Reinforced (MIN 14" AG)	142	
	FF-S-14-7-0.179	A36	7	5.04	0.179	3" x 5" Reinforced (MIN 14" AG)	190	
15	FF-S-15-6.5-0.12	A36	6.5	4.4	0.12	3" x 5" Reinforced (MIN 14" AG)	139	
	FF-S-15-6.5-0.179	A36	6.5	4.4	0.179	3" x 5" Reinforced (MIN 14" AG)	185	
	FF-S-15-7-0.12	A36	7	4.9	0.12	3" x 5" Reinforced (MIN 14" AG)	148	
	FF-S-15-7-0.179	A36	7	4.9	0.179	3" x 5" Reinforced (MIN 14" AG)	199	
16	FF-S-16-6.5-0.12	A36	6.5	4.26	0.12	3" x 5" Reinforced (MIN 14" AG)	144	
	FF-S-16-6.5-0.179	A36	6.5	4.26	0.179	3" x 5" Reinforced (MIN 14" AG)	193	
	FF-S-16-7-0.12	A36	7	4.76	0.12	3" x 5" Reinforced (MIN 14" AG)	154	
	FF-S-16-7-0.179	A36	7	4.76	0.179	3" x 5" Reinforced (MIN 14" AG)	207	
17	FF-S-17-6.5-0.12	A36	6.5	4.12	0.12	3" x 5" Reinforced (MIN 14" AG)	149	
	FF-S-17-6.5-0.179	A36	6.5	4.12	0.179	3" x 5" Reinforced (MIN 14" AG)	200	
	FF-S-17-7-0.12	A36	7	4.62	0.12	3" x 5" Reinforced (MIN 14" AG)	159	
	FF-S-17-7-0.179	A36	7	4.62	0.179	3" x 5" Reinforced (MIN 14" AG)	215	
18	FF-S-18-7-0.12	A36	7	4.48	0.12	3" x 5" Reinforced (MIN 14" AG)	165	
	FF-S-18-7-0.179	A36	7	4.48	0.179	3" x 5" Reinforced (MIN 14" AG)	223	

\* Weight includes the pole shaft and baseplate.

# SHAFT LOADING

FF Steel // Loading	Nominal Mounting Height (ft)	Catalog Code	Design Information // AASHTO LTS-6, Latest Revision **									
			90 MPH		100 MPH		110 MPH		120 MPH		150 MPH	
			Max EPA (sq ft)	Max Load (lbs)	Max EPA (sq ft)	Max Load (lbs)	Max EPA (sq ft)	Max Load (lbs)	Max EPA (sq ft)	Max Load (lbs)	Max EPA (sq ft)	Max Load (lbs)
10	FF-S-10-5.75-0.12	30.3	500	24.3	400	20.0	400	16.8	300	10.5	300	
	FF-S-10-5.75-0.179	41.1	600	33.1	500	27.3	400	22.8	400	14.5	300	
	FF-S-10-6.5-0.12	39.8	500	32.1	500	26.5	400	22.2	400	14.0	300	
	FF-S-10-6.5-0.179	57.1	700	46.3	600	38.2	500	32.0	500	20.4	400	
11	FF-S-11-5.75-0.12	27.2	400	21.7	400	17.8	300	14.9	300	9.4	200	
	FF-S-11-5.75-0.179	36.7	500	29.5	400	24.2	400	20.2	400	12.8	300	
	FF-S-11-6.5-0.12	35.6	500	28.8	400	23.7	400	19.9	300	12.5	300	
	FF-S-11-6.5-0.179	50.8	700	41.1	600	34.0	500	28.5	400	18.1	300	

FF-S PEDESTRIAN METAL POLE

FF Steel // Loading

Nominal Mounting Height (ft)	Catalog Code	Design Information // AASHTO LTS-6, Latest Revision **									
		90 MPH		100 MPH		110 MPH		120 MPH		150 MPH	
		Max EPA (sq ft)	Max Load (lbs)	Max EPA (sq ft)	Max Load (lbs)	Max EPA (sq ft)	Max Load (lbs)	Max EPA (sq ft)	Max Load (lbs)	Max EPA (sq ft)	Max Load (lbs)
12	FF-S-12-5.75-0.12	24.5	400	19.6	300	15.9	300	13.2	300	8.3	200
	FF-S-12-5.75-0.179	33.0	500	26.6	400	21.6	400	18.1	300	11.4	300
	FF-S-12-6.5-0.12	32.1	500	25.9	400	21.3	400	17.9	300	11.2	300
	FF-S-12-6.5-0.179	45.7	600	37.0	500	30.4	500	25.5	400	16.2	300
13	FF-S-13-6.5-0.12	29.3	400	23.5	400	19.4	300	16.1	300	10.1	300
	FF-S-13-6.5-0.179	41.3	600	33.3	500	27.5	400	23.0	400	14.6	300
14	FF-S-14-6.5-0.12	26.7	400	21.3	400	17.6	300	14.6	300	9.2	200
	FF-S-14-6.5-0.179	37.7	500	30.2	500	24.9	400	20.8	400	13.2	300
	FF-S-14-7-0.12	31.6	500	25.5	400	20.9	400	17.6	300	11.0	300
	FF-S-14-7-0.179	45.3	600	36.7	500	30.2	500	25.3	400	16.0	300
15	FF-S-15-6.5-0.12	24.4	400	19.6	300	16.0	300	13.3	300	8.3	200
	FF-S-15-6.5-0.179	34.5	500	27.7	400	22.7	400	19.0	300	11.9	300
	FF-S-15-7-0.12	29.1	400	23.3	400	19.2	300	16.0	300	10.0	300
	FF-S-15-7-0.179	41.5	600	33.5	500	27.7	400	23.1	400	14.6	300
16	FF-S-16-6.5-0.12	22.4	400	17.9	300	14.5	300	12.0	300	7.5	200
	FF-S-16-6.5-0.179	31.6	500	25.4	400	20.7	400	17.4	300	10.8	300
	FF-S-16-7-0.12	26.8	400	21.4	400	17.6	300	14.6	300	9.1	200
	FF-S-16-7-0.179	38.3	500	30.8	500	25.4	400	21.2	400	13.3	300
17	FF-S-17-6.5-0.12	20.3	400	16.2	300	13.0	300	10.8	300	6.7	200
	FF-S-17-6.5-0.179	29.0	400	23.0	400	18.9	300	15.7	300	9.8	200
	FF-S-17-7-0.12	24.4	400	19.6	300	16.0	300	13.2	300	8.2	200
	FF-S-17-7-0.179	34.9	500	28.1	400	23.0	400	19.3	300	12.1	300
18	FF-S-18-7-0.12	22.2	400	17.8	300	14.5	300	12.0	300	7.4	200
	FF-S-18-7-0.179	31.9	500	25.6	400	21.0	400	17.6	300	10.9	300

\*\* EPA represents the Effective Projected Area of the attachments on the pole. Designs are limited to post top luminaires or attachments located at or below the mounting height. Consult factory for poles supporting attachments located above the mounting height.

BASE COMPATIBILITY

Pole Butt Size	Split Bases								
	KSB10	KSB11	KSB16	KSB19	KSB20	KSB52	KSB70	KSB76	KSB77
5.75									
6.5									
7									