

# FF-A // FLUTED TAPERED ALUMINUM

PEDESTRIAN METAL POLE



**King Luminaire**

## POLE SPECIFICATIONS

**MATERIAL:**  
Fluted Tapered Aluminum

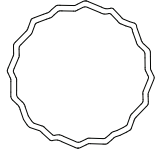
**POLE HEIGHT:**  
10' - 18'

**OPTIONS:**  
GFI - Ground Fault Receptacle  
BA - Banner Arms  
FPH - Flower Pot Holder  
FH - Flag Holder

**ALLOY:**  
5052-H32

**FINISH:**  
Available in textured or smooth.

### CROSS SECTION:

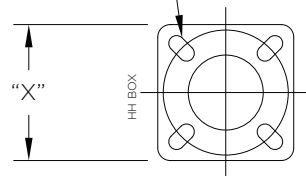


Fluted Tapered (FF)

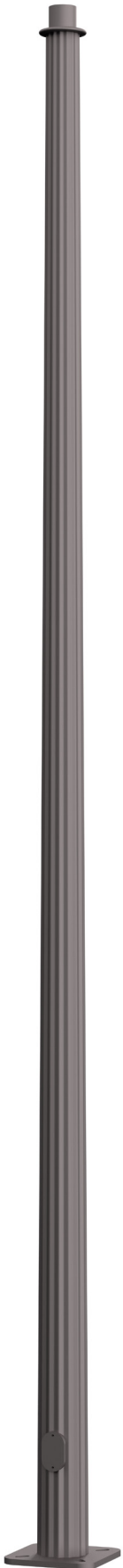
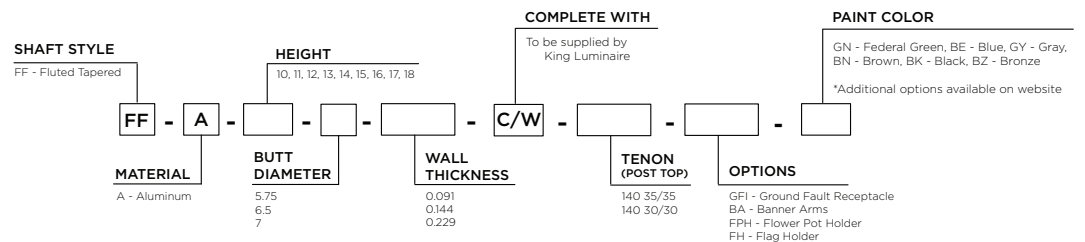
## BASEPLATE DETAILS

Pole		Baseplate			Bolt Circle		Anchor Bolts	
Butt Diameter (in)	Wall Thickness (in)	"X" Square (in)	Thickness (in)	Corner Radius (in)	"Y" Dia (in)	+/- (in)	Dia x Length x Hook (in)	Projection (in)
5.75	0.091	11.25	0.5	1.75	10	1	0.75 x 27 x 3.75	3
5.75	0.144	11.25	0.75	1.75	10	1	0.75 x 27 x 3.75	3.25
5.75	0.229	11.25	0.75	1.75	10	1	0.75 x 27 x 3.75	3.25
6.5	0.091	12.0625	0.75	1.75	11	1	0.75 x 27 x 3.75	3.25
6.5	0.144	12.0625	0.75	1.75	11	1	0.75 x 27 x 3.75	3.25
6.5	0.229	12.0625	0.75	1.75	11	1	0.75 x 27 x 3.75	3.25
7	0.091	12.0625	0.75	1.75	11	0.75	0.75 x 27 x 3.75	3.25
7	0.144	12.0625	0.75	1.75	11	0.75	0.75 x 27 x 3.75	3.25
7	0.229	12.0625	0.75	1.75	11	0.75	0.75 x 27 x 3.75	3.25

SLOTS ON A "Y" DIA. BOLT CIRCLE



## HOW TO ORDER



# SHAFT DETAILS

## FF-A PEDESTRIAN METAL POLE

FF ALUMINUM // Pole Details

Nominal Mounting Height (ft)	Catalog Code	Alloy	Butt (in)	Tip (in)	Wall Thickness (in)	Handhole	Wt. (lbs) *
10	FF-A-10-5.75-0.091	5052-H32	5.75	4.35	0.091	3" x 5" Reinforced (MIN 9" AG)	23
	FF-A-10-5.75-0.144	5052-H32	5.75	4.35	0.144	3" x 5" Reinforced (MIN 9" AG)	35
	FF-A-10-5.75-0.229	5052-H32	5.75	4.35	0.229	3" x 5" Reinforced (MIN 9" AG)	49
	FF-A-10-6.5-0.091	5052-H32	6.5	5.1	0.091	3" x 5" Reinforced (MIN 14" AG)	30
	FF-A-10-6.5-0.144	5052-H32	6.5	5.1	0.144	3" x 5" Reinforced (MIN 14" AG)	40
	FF-A-10-6.5-0.229	5052-H32	6.5	5.1	0.229	3" x 5" Reinforced (MIN 14" AG)	57
11	FF-A-11-5.75-0.091	5052-H32	5.75	4.21	0.091	3" x 5" Reinforced (MIN 9" AG)	24
	FF-A-11-5.75-0.144	5052-H32	5.75	4.21	0.144	3" x 5" Reinforced (MIN 9" AG)	37
	FF-A-11-5.75-0.229	5052-H32	5.75	4.21	0.229	3" x 5" Reinforced (MIN 9" AG)	53
	FF-A-11-6.5-0.091	5052-H32	6.5	4.96	0.091	3" x 5" Reinforced (MIN 14" AG)	31
	FF-A-11-6.5-0.144	5052-H32	6.5	4.96	0.144	3" x 5" Reinforced (MIN 14" AG)	43
	FF-A-11-6.5-0.229	5052-H32	6.5	4.96	0.229	3" x 5" Reinforced (MIN 14" AG)	61
12	FF-A-12-5.75-0.091	5052-H32	5.75	4.07	0.091	3" x 5" Reinforced (MIN 9" AG)	25
	FF-A-12-5.75-0.144	5052-H32	5.75	4.07	0.144	3" x 5" Reinforced (MIN 9" AG)	39
	FF-A-12-5.75-0.229	5052-H32	5.75	4.07	0.229	3" x 5" Reinforced (MIN 9" AG)	56
	FF-A-12-6.5-0.091	5052-H32	6.5	4.82	0.091	3" x 5" Reinforced (MIN 14" AG)	33
	FF-A-12-6.5-0.144	5052-H32	6.5	4.82	0.144	3" x 5" Reinforced (MIN 14" AG)	45
	FF-A-12-6.5-0.229	5052-H32	6.5	4.82	0.229	3" x 5" Reinforced (MIN 14" AG)	64
13	FF-A-13-6.5-0.091	5052-H32	6.5	4.68	0.091	3" x 5" Reinforced (MIN 14" AG)	35
	FF-A-13-6.5-0.144	5052-H32	6.5	4.68	0.144	3" x 5" Reinforced (MIN 14" AG)	48
	FF-A-13-6.5-0.229	5052-H32	6.5	4.68	0.229	3" x 5" Reinforced (MIN 14" AG)	68
14	FF-A-14-6.5-0.091	5052-H32	6.5	4.54	0.091	3" x 5" Reinforced (MIN 14" AG)	36
	FF-A-14-6.5-0.144	5052-H32	6.5	4.54	0.144	3" x 5" Reinforced (MIN 14" AG)	50
	FF-A-14-6.5-0.229	5052-H32	6.5	4.54	0.229	3" x 5" Reinforced (MIN 14" AG)	72
	FF-A-14-7-0.091	5052-H32	7	5.04	0.091	3" x 5" Reinforced (MIN 14" AG)	38
	FF-A-14-7-0.144	5052-H32	7	5.04	0.144	3" x 5" Reinforced (MIN 14" AG)	54
	FF-A-14-7-0.229	5052-H32	7	5.04	0.229	3" x 5" Reinforced (MIN 14" AG)	77
15	FF-A-15-6.5-0.144	5052-H32	6.5	4.4	0.144	3" x 5" Reinforced (MIN 14" AG)	52
	FF-A-15-6.5-0.229	5052-H32	6.5	4.4	0.229	3" x 5" Reinforced (MIN 14" AG)	75
	FF-A-15-7-0.091	5052-H32	7	4.9	0.091	3" x 5" Reinforced (MIN 14" AG)	40
	FF-A-15-7-0.144	5052-H32	7	4.9	0.144	3" x 5" Reinforced (MIN 14" AG)	56
	FF-A-15-7-0.229	5052-H32	7	4.9	0.229	3" x 5" Reinforced (MIN 14" AG)	81
16	FF-A-16-6.5-0.144	5052-H32	6.5	4.26	0.144	3" x 5" Reinforced (MIN 14" AG)	54
	FF-A-16-6.5-0.229	5052-H32	6.5	4.26	0.229	3" x 5" Reinforced (MIN 14" AG)	79
	FF-A-16-7-0.091	5052-H32	7	4.76	0.091	3" x 5" Reinforced (MIN 14" AG)	41
	FF-A-16-7-0.144	5052-H32	7	4.76	0.144	3" x 5" Reinforced (MIN 14" AG)	58
	FF-A-16-7-0.229	5052-H32	7	4.76	0.229	3" x 5" Reinforced (MIN 14" AG)	85
17	FF-A-17-6.5-0.144	5052-H32	6.5	4.12	0.144	3" x 5" Reinforced (MIN 14" AG)	56
	FF-A-17-6.5-0.229	5052-H32	6.5	4.12	0.229	3" x 5" Reinforced (MIN 14" AG)	82
	FF-A-17-7-0.144	5052-H32	7	4.62	0.144	3" x 5" Reinforced (MIN 14" AG)	61
	FF-A-17-7-0.229	5052-H32	7	4.62	0.229	3" x 5" Reinforced (MIN 14" AG)	89
18	FF-A-18-7-0.144	5052-H32	7	4.48	0.144	3" x 5" Reinforced (MIN 14" AG)	63
	FF-A-18-7-0.229	5052-H32	7	4.48	0.229	3" x 5" Reinforced (MIN 14" AG)	92

\* Weight includes the pole shaft and baseplate.

# SHAFT LOADING

# FF-A PEDESTRIAN METAL POLE

FF ALUMINUM // Loading	Nominal Mounting Height (ft)	Catalog Code	Design Information // AASHTO LTS-6, Latest Revision **									
			90 MPH		100 MPH		110 MPH		120 MPH		150 MPH	
			Max EPA (sq ft)	Max Load (lbs)	Max EPA (sq ft)	Max Load (lbs)	Max EPA (sq ft)	Max Load (lbs)	Max EPA (sq ft)	Max Load (lbs)	Max EPA (sq ft)	Max Load (lbs)
10	FF-A-10-5.75-0.091	4.7	200	3.5	200	2.7	200	2.2	200	1.2	200	
	FF-A-10-5.75-0.144	8.6	200	6.6	200	5.3	200	4.4	200	2.6	200	
	FF-A-10-5.75-0.229	11.6	300	9.2	200	7.4	200	6.1	200	3.7	200	
	FF-A-10-6.5-0.091	6.6	200	5.2	200	4.2	200	3.4	200	2.0	200	
	FF-A-10-6.5-0.144	11.6	300	9.3	200	7.6	200	6.3	200	3.8	200	
	FF-A-10-6.5-0.229	16.8	300	13.5	300	11.0	300	9.2	200	5.7	200	
11	FF-A-11-5.75-0.091	3.8	200	2.7	200	2.0	200	1.6	200	0.8	200	
	FF-A-11-5.75-0.144	7.4	200	5.6	200	4.4	200	3.6	200	2.1	200	
	FF-A-11-5.75-0.229	10.0	300	7.9	200	6.3	200	5.2	200	3.1	200	
	FF-A-11-6.5-0.091	5.5	200	4.3	200	3.4	200	2.8	200	1.5	200	
	FF-A-11-6.5-0.144	10.0	300	8.0	200	6.5	200	5.4	200	3.2	200	
	FF-A-11-6.5-0.229	14.7	300	11.7	300	9.7	200	8.0	200	4.9	200	
12	FF-A-12-5.75-0.091	3.1	200	2.1	200	1.5	200	1.1	200	0.5	200	
	FF-A-12-5.75-0.144	6.4	200	4.8	200	3.7	200	2.9	200	1.6	200	
	FF-A-12-5.75-0.229	8.8	200	6.8	200	5.3	200	4.4	200	2.6	200	
	FF-A-12-6.5-0.091	4.5	200	3.5	200	2.7	200	2.2	200	1.2	200	
	FF-A-12-6.5-0.144	8.9	200	6.9	200	5.6	200	4.6	200	2.7	200	
	FF-A-12-6.5-0.229	12.8	300	10.2	300	8.4	200	6.9	200	4.2	200	
13	FF-A-13-6.5-0.091	3.8	200	2.8	200	2.1	200	1.7	200	0.8	200	
	FF-A-13-6.5-0.144	7.7	200	6.0	200	4.8	200	3.9	200	2.2	200	
	FF-A-13-6.5-0.229	11.3	300	9.0	200	7.3	200	6.0	200	3.6	200	
14	FF-A-14-6.5-0.091	3.1	200	2.1	200	1.6	200	1.2	200	0.5	200	
	FF-A-14-6.5-0.144	6.7	200	5.1	200	4.0	200	3.2	200	1.8	200	
	FF-A-14-6.5-0.229	9.9	200	7.8	200	6.3	200	5.2	200	3.1	200	
	FF-A-14-7-0.091	4.1	200	3.1	200	2.4	200	1.9	200	0.9	200	
	FF-A-14-7-0.144	8.4	200	6.6	200	5.3	200	4.3	200	2.5	200	
	FF-A-14-7-0.229	12.4	300	9.9	200	8.0	200	6.6	200	4.0	200	
15	FF-A-15-6.5-0.144	5.8	200	4.3	200	3.4	200	2.7	200	1.4	200	
	FF-A-15-6.5-0.229	8.9	200	6.9	200	5.5	200	4.4	200	2.6	200	
	FF-A-15-7-0.091	3.4	200	2.5	200	1.9	200	1.4	200	0.6	200	
	FF-A-15-7-0.144	7.3	200	5.7	200	4.5	200	3.6	200	2.0	200	
	FF-A-15-7-0.229	11.1	300	8.8	200	7.1	200	5.8	200	3.4	200	
16	FF-A-16-6.5-0.144	5.0	200	3.6	200	2.7	200	2.1	200	1.1	200	
	FF-A-16-6.5-0.229	7.9	200	6.0	200	4.7	200	3.8	200	2.1	200	
	FF-A-16-7-0.091	2.7	200	1.9	200	1.3	200	1.0	200	-	-	
	FF-A-16-7-0.144	6.4	200	4.9	200	3.8	200	3.1	200	1.7	200	
	FF-A-16-7-0.229	9.9	200	7.8	200	6.3	200	5.1	200	3.0	200	
17	FF-A-17-6.5-0.144	4.2	200	2.9	200	2.1	200	1.6	200	0.7	200	
	FF-A-17-6.5-0.229	6.9	200	5.1	200	3.9	200	3.1	200	1.7	200	
	FF-A-17-7-0.144	5.5	200	4.1	200	3.2	200	2.5	200	1.3	200	
	FF-A-17-7-0.229	8.8	200	6.8	200	5.4	200	4.4	200	2.5	200	
18	FF-A-18-7-0.144	4.7	200	3.4	200	2.6	200	2.0	200	0.9	200	
	FF-A-18-7-0.229	7.8	200	5.9	200	4.7	200	3.7	200	2.1	200	

\*\* EPA represents the Effective Projected Area of the attachments on the pole. Designs are limited to post top luminaires or attachments located at or below the mounting height. Consult factory for poles supporting attachments located above the mounting height.

# BASE COMPATIBILITY

FF-A PEDESTRIAN METAL POLE

Pole Butt Size	Split Bases								
	KSB10	KSB11	KSB16	KSB19	KSB20	KSB52	KSB70	KSB76	KSB77
5.75	■		■	■		■	■		
6.5			■	■		■	■		■
7			■	■			■		■